


Configuring WPA2 for Windows XP Wireless

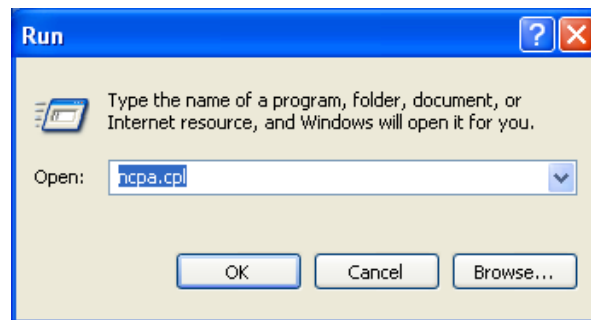
Requirements for wireless using WPA2 on Windows XP

- Your wireless card must support 802.1x, AES, and WPA2.
- Your computer must have Windows XP service pack 2 installed and all the latest updates (you can download them through the Windows update site <http://windowsupdate.microsoft.com>).
- Make sure you have the most current drivers for your wireless card.

****Important first step:** Windows XP users **must** install a Microsoft update to enable WPA2 support before continuing. You will need to restart your computer after downloading and installing the update. The update can be downloaded at <http://support.microsoft.com/kb/893357>.

After installing the update and rebooting, you are then ready to resume the WPA2 configuration.

At the start menu -  - select "Run" and type in "ncpa.cpl" and click ok.



This will take you to the network connection screen (Figure 10)

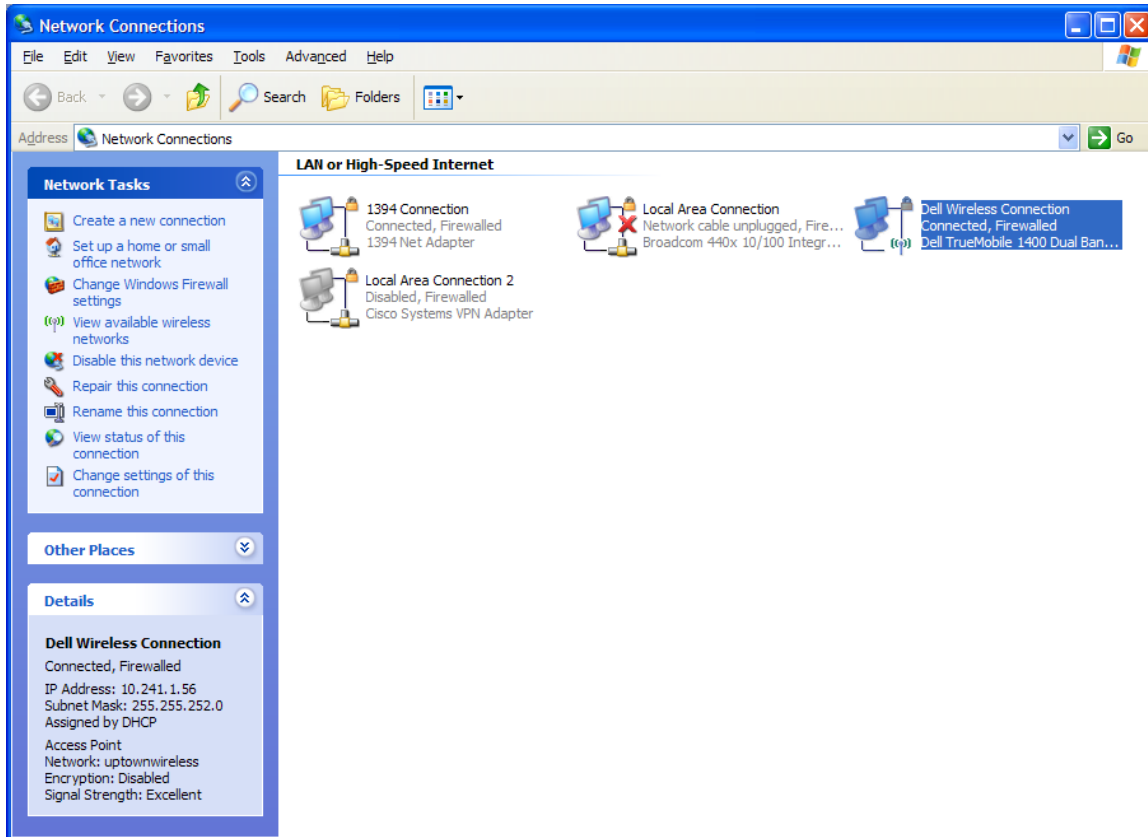


Fig. 10

Right mouse click your wireless connection icon and select properties. This will bring up the following screen (figure 11). Click on the “Wireless Networks” tab. Make sure the “Use Windows to configure my wireless network settings” is checked. .

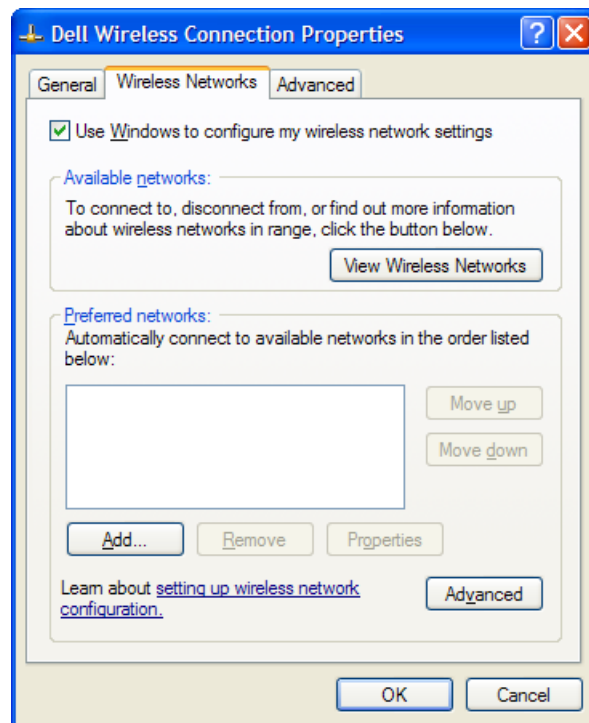
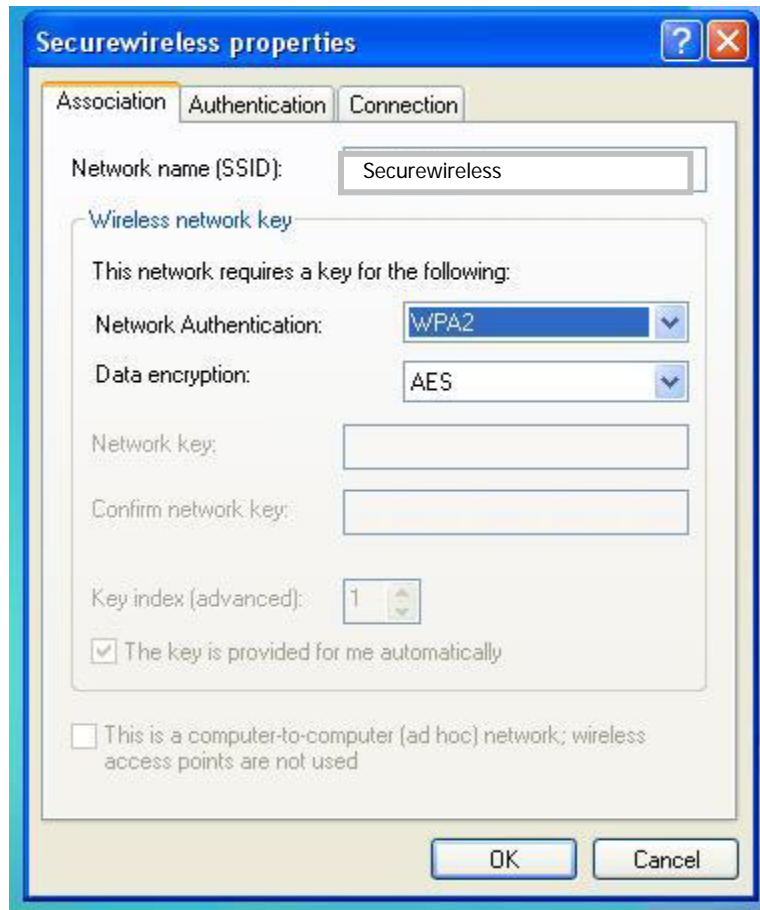


Fig. 11

Click the “Add” button and at the association tab fill out the window as below.

The network authentication is WPA2 and the Data Encryption is AES.



***** If WPA2 is not listed as an option, then one of the following is the likely cause: *****

- You haven't installed the update from Microsoft as directed above.
- The driver for your wireless adapter does not support WPA2. Check with the manufacturer to see if there is an updated version of the driver available.
- Your wireless adapter does not support WPA2.

Click the “Authentication” tab and fill out as in figure 13. The EAP type is “Protected EAP (PEAP)” and make sure the “Authenticate as computer when computer information is available” is UNCHECKED.

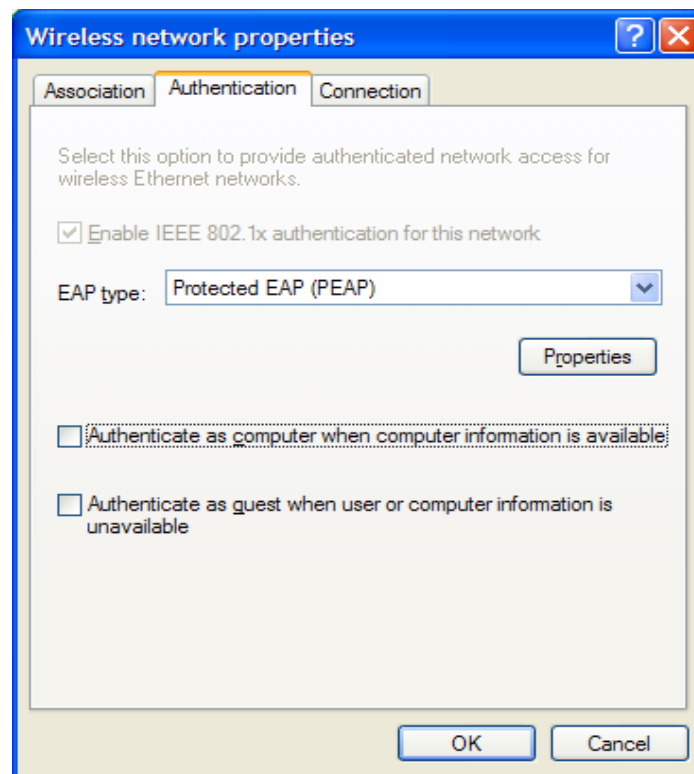


Fig. 13

Click the “Properties” button and **uncheck** the “Validate server certificate” option and make sure that the authentication method is Secured password (EAP-MSCHAP v2) as in figure 14.

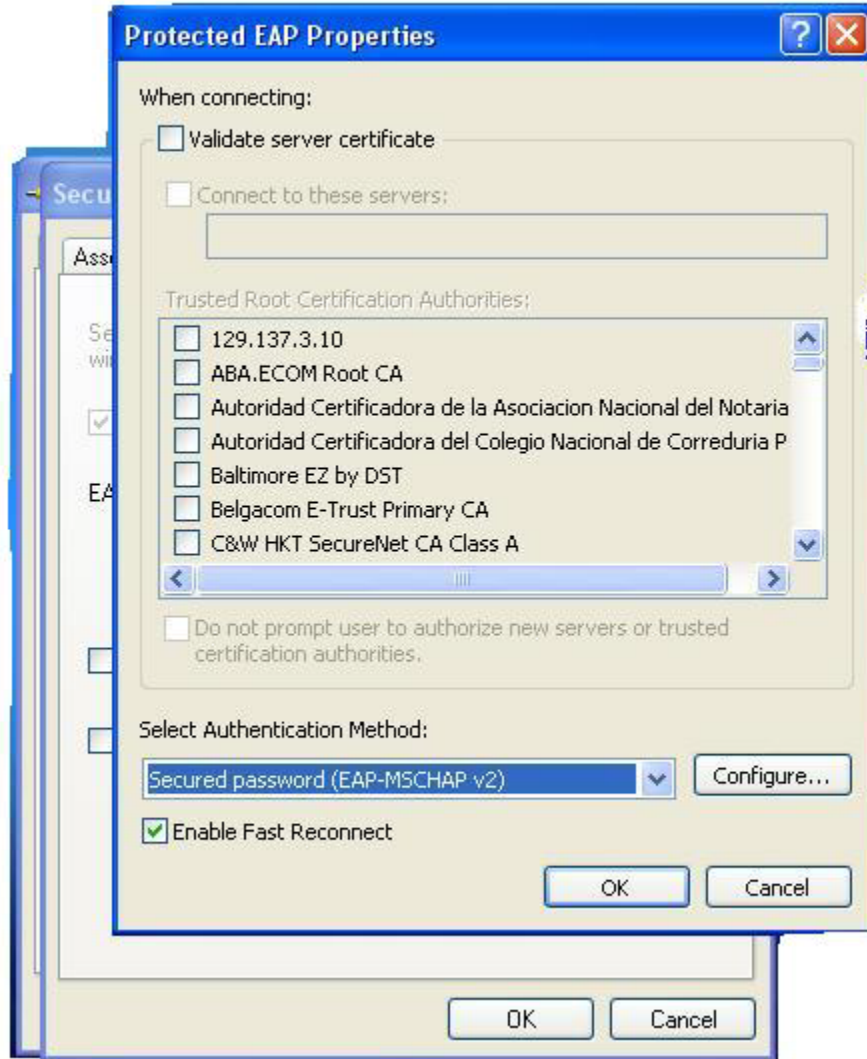


Fig. 14

Click the "Configure" button and uncheck the box (see Figure 15). This will ensure that the proper login information is used.

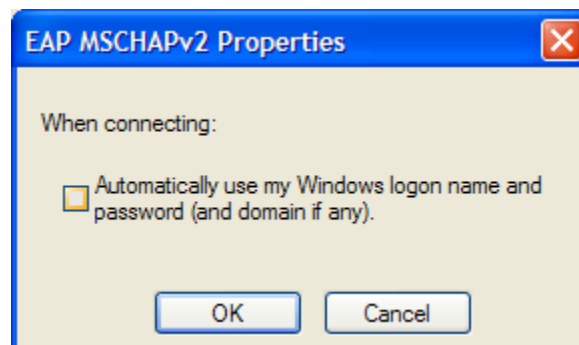


Fig. 15

Click Ok on each window until you get back to the original properties screen. There is a box labeled “Advanced”. Click to open it up. Select the choice, “Access point (infrastructure) networks only,” and uncheck the option of automatically connection to non-preferred networks (Figure 16)

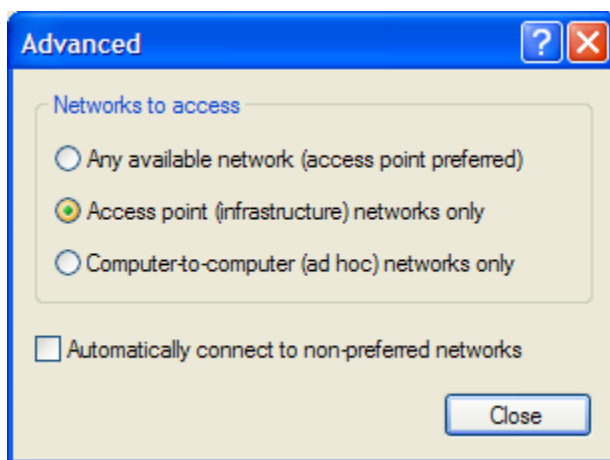


Fig. 16

Click “Close” and then OK. Congratulations, wireless using WPA2 is now set up. If you are within range of an access point, you will see the following image (With the name of your wireless connection) (figure 17)

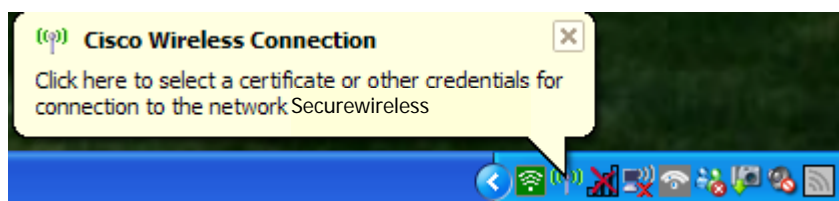


Fig. 17

Click the text balloon and it will take you to the following window (figure 18):



Fig. 18

Enter your 6+2 username and password in the appropriate blanks, (this is the same as your Central Login username and password) **but leave the logon domain empty**. Click "OK" and you will be authenticated onto the wireless network using WPA2.